

Parkside

Community School

JANUARY
2010
NEWSLETTER



Enrollment Process:

January marks the beginning of Parkside's Enrollment process for the next academic year, 2010/2011. All current Parkside families are asked to make enrollment commitments for the fall.

This Friday you will be receiving your re-enrollment letter and form. If you are planning to re-enroll your child at Parkside for the 2010/2011 school year and/or if you have a currently un-enrolled sibling child that you would like to consider for enrollment for next year, please fill out the form(s) provided to you. Return the form(s) by **Tuesday, February 16th** along with a \$300 enrollment fee for each student. Once we have a clear list of returning students we start serving the families on our waitlist. Your prompt responses will assist us to attend to families on our waitlist in a timely fashion.

To assist you in your decision making process:

- ❖ We are currently hosting Introduction meetings for each program we offer: Upper Elementary (Jan. 26), Lower Elementary (Jan. 27), Primary (Jan. 28). Our current families are invited to learn more about every age group we serve and every family on our waitlist received an invitation to these Introductions as well.

- ❖ We have set up February 12th as a Conference Day for parents of 3rd year students of our Primary and Lower Elementary Program. This is an opportunity to take a look at the culmination of your child's work, as options are being considered.

Please stay in communication as this February 16th date approaches, Claire's door will always be open. We are here to serve your children and value your trust.



Inside this issue:

*Enrollment Process	Cover
*Families in Balance	1
*Rewards Program	2
*Calendar Dates	

Early Release Days:

March 11 & 12 we will be closing school early for all classrooms:

Primary 12:00

All Elementary 12:30

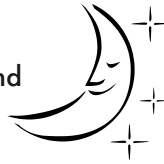
These afternoons will be set aside for pre-visits for new children joining our school.

Spring Break:

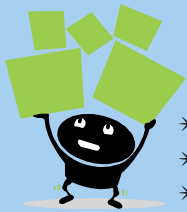
Spring Break is just around the corner, March 15 - 19. Take this time to enjoy your families.

Spring Camp-Out:

We hope you all can attend the Spring Camp-out, March 26 - 27. As always the campout will be held at Pedernales Falls. Saturday night is potluck dinner followed by singing around the campfire. More details to come as it gets closer.



Families in Balance



- * Does "busy" describe you and your family?
- * Are you feeling overwhelmed in your daily life?
- * Are your weekends restful?
- * Do you hear yourself say, "What happened to my day?"
- * Do you feel tugged and pulled by schedules?
- * Do you wish you enjoyed your children more?
- * Do you wish you enjoyed yourself more?
- * Can you find any time for yourself? If so, what might you do with it?



Gail Allen presents **Families in Balance**

Saturday, February 20, 10:00 - 12:00

Location: Parkside



Come join us as Gail shares her insights on bringing balance to our contemporary family life and leave with some tools on how to identify challenging areas and create numerous solutions and coping mechanisms to bring harmony back into your own life. Start thinking of areas of your family life that feel out of balance and bring them with you. This is a gift to you and your family from Parkside.

- Please make child care arrangement so you may attend.
- Let Shannon know if you'll attend by February 16th.

Who is Gail Allen?

International Speaker, Parent Educator, Family Consultant, Co-Founder For Kids Sake, over 40 years experience, a mother and grandmother

Parkside Rewards Program



**Office
DEPOT**



Every year, Parkside receives donations through a shopping rewards program. If you shop at any of the stores below, you could be sending Parkside a percentage of what you spend. Simply go to the store's online sign-up page (listed) to get started, or you can stop by the customer service desk in the store.

Target RedCard - enroll in their "Take Charge of Education" program at

www.target.com ID# is 110553

Office Depot - sign up for their "Back to School" programs at

www.officedepot.com ID# is 2006118273

Randalls - To enroll in their "Remarkable" Club Card (in-store savings card, not a credit card), just go to the Customer Service Desk and ask that your savings go to Parkside - #396. This is such an easy way to contribute. Every time you shop, a little bit goes to Parkside, it all adds up and helps our very own families.
www.randalls.com ID# is 396

Calendar

Here are some of the events coming up at Parkside.

We are working hard to keep our website current with everything going on, so please visit. Any comments or feedback would be greatly appreciated as we continue to add useful information.

www.parksidecommunityschool.org

	January	February	March
	26 Upper Elementary Introductions	12 No School (Conference Day)	11-12 Early Release
	27 Lower Elementary Introductions	15 No School	15-19 No School (Spring Break)
	28 Primary Introductions	20 Families in Balance -Gail Allen	26-27 Spring Camp-out